

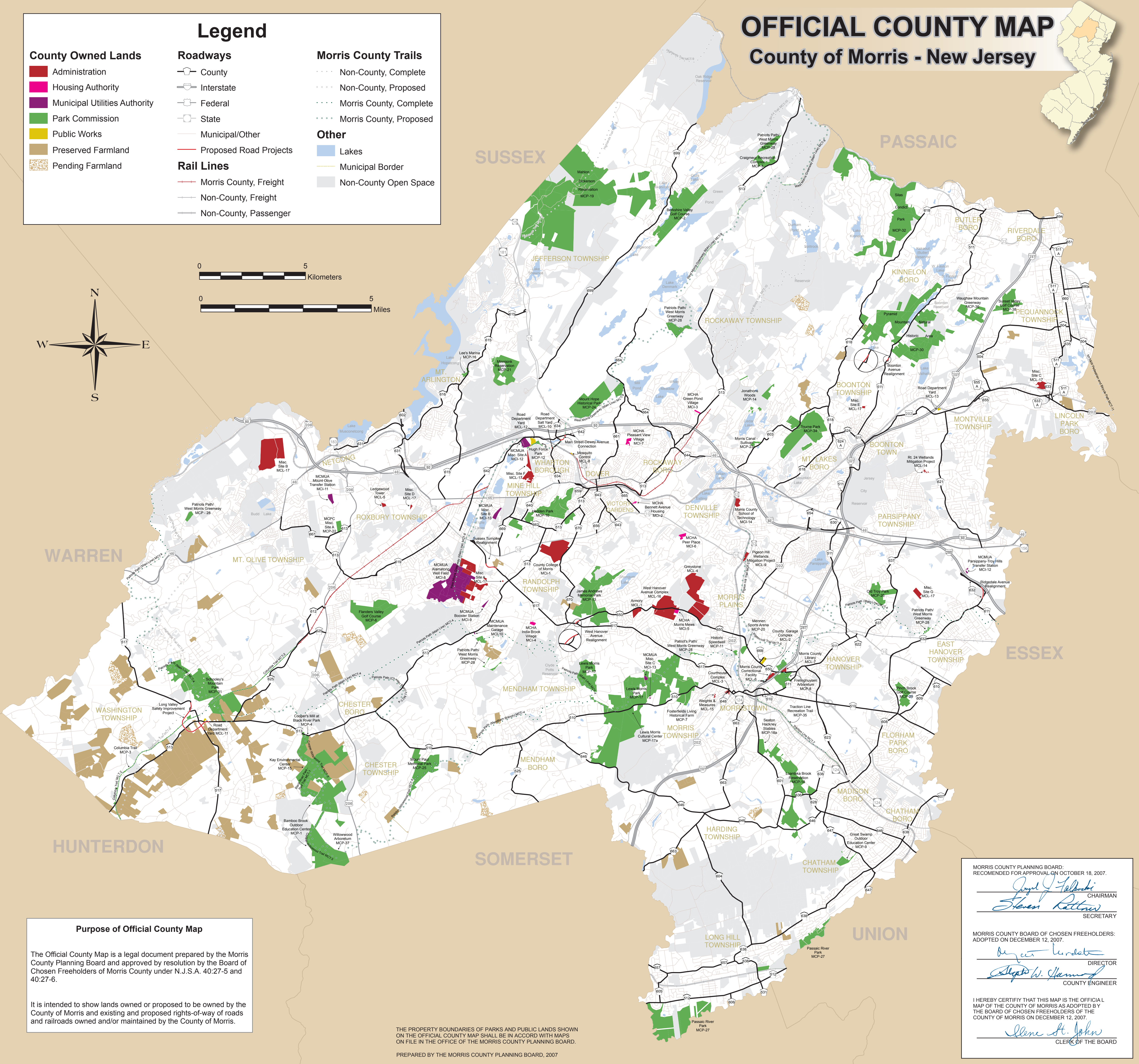
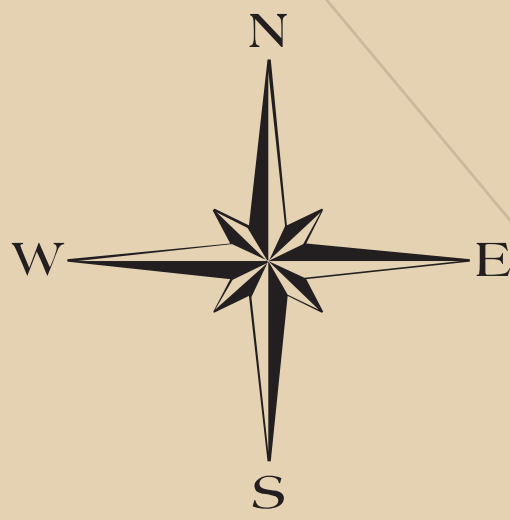
# OFFICIAL COUNTY MAP

## County of Morris - New Jersey



### Legend

<b>County Owned Lands</b>	<b>Roadways</b>	<b>Morris County Trails</b>
Administration	County	Non-County, Complete
Housing Authority	Interstate	Non-County, Proposed
Municipal Utilities Authority	Federal	Morris County, Complete
Park Commission	State	Morris County, Proposed
Public Works	Municipal/Other	<b>Other</b>
Preserved Farmland	Proposed Road Projects	Lakes
Pending Farmland	<b>Rail Lines</b>	Municipal Border
	Morris County, Freight	Non-County Open Space
	Non-County, Freight	
	Non-County, Passenger	



**Purpose of Official County Map**

The Official County Map is a legal document prepared by the Morris County Planning Board and approved by resolution by the Board of Chosen Freeholders of Morris County under N.J.S.A. 40:27-5 and 40:27-6.

It is intended to show lands owned or proposed to be owned by the County of Morris and existing and proposed rights-of-way of roads and railroads owned and/or maintained by the County of Morris.

THE PROPERTY BOUNDARIES OF PARKS AND PUBLIC LANDS SHOWN ON THE OFFICIAL COUNTY MAP SHALL BE IN ACCORD WITH MAPS ON FILE IN THE OFFICE OF THE MORRIS COUNTY PLANNING BOARD.

PREPARED BY THE MORRIS COUNTY PLANNING BOARD, 2007

MORRIS COUNTY PLANNING BOARD:  
RECOMMENDED FOR APPROVAL ON OCTOBER 18, 2007.

*Joseph J. Felbicki* CHAIRMAN  
*Steven Rattner* SECRETARY

MORRIS COUNTY BOARD OF CHOSEN FREEHOLDERS:  
ADOPTED ON DECEMBER 12, 2007.

*Raymond L. Leland* DIRECTOR  
*Stephen W. Hammond* COUNTY ENGINEER

I HEREBY CERTIFY THAT THIS MAP IS THE OFFICIAL MAP OF THE COUNTY OF MORRIS AS ADOPTED BY THE BOARD OF CHOSEN FREEHOLDERS OF THE COUNTY OF MORRIS ON DECEMBER 12, 2007.

*Elene St. John* CLERK OF THE BOARD

